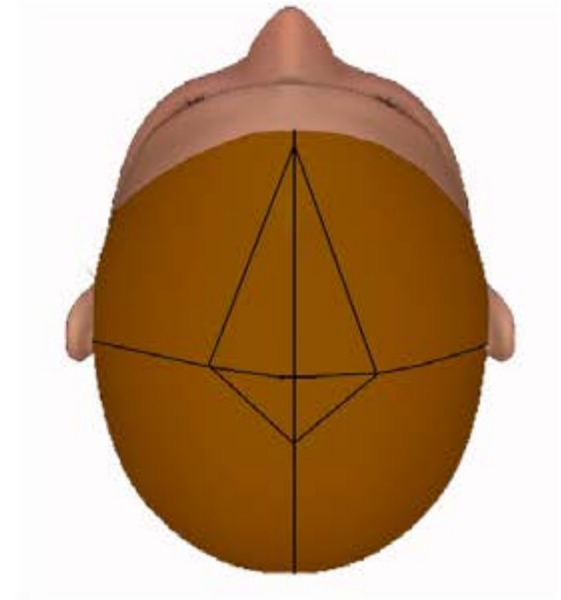
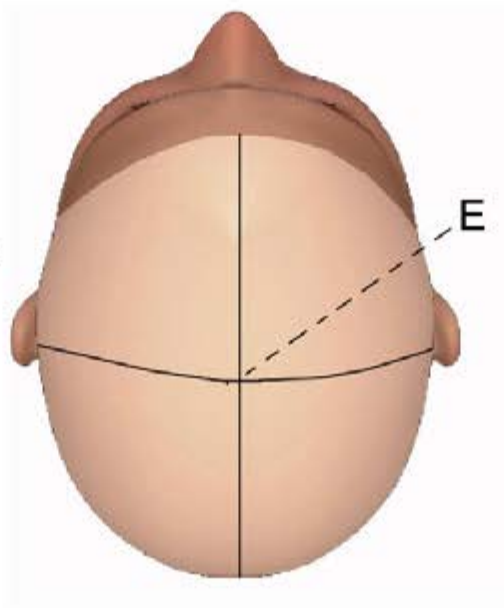
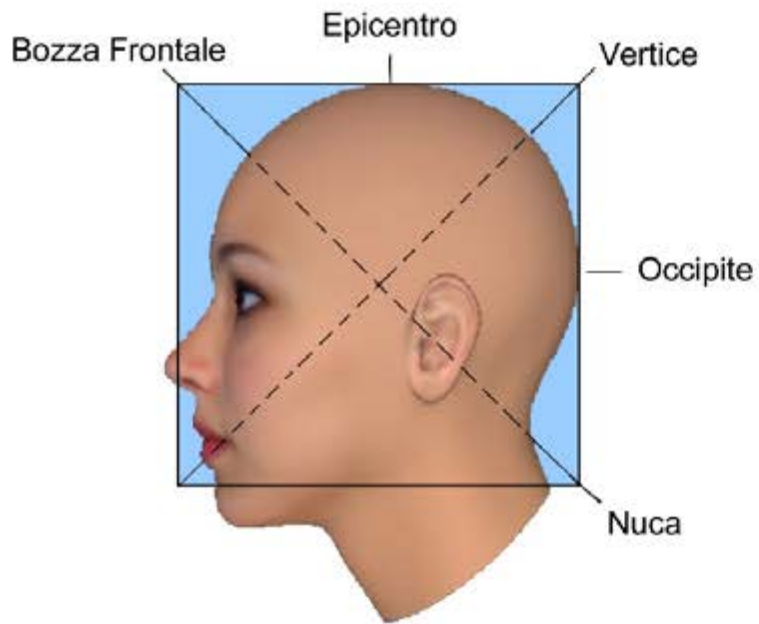




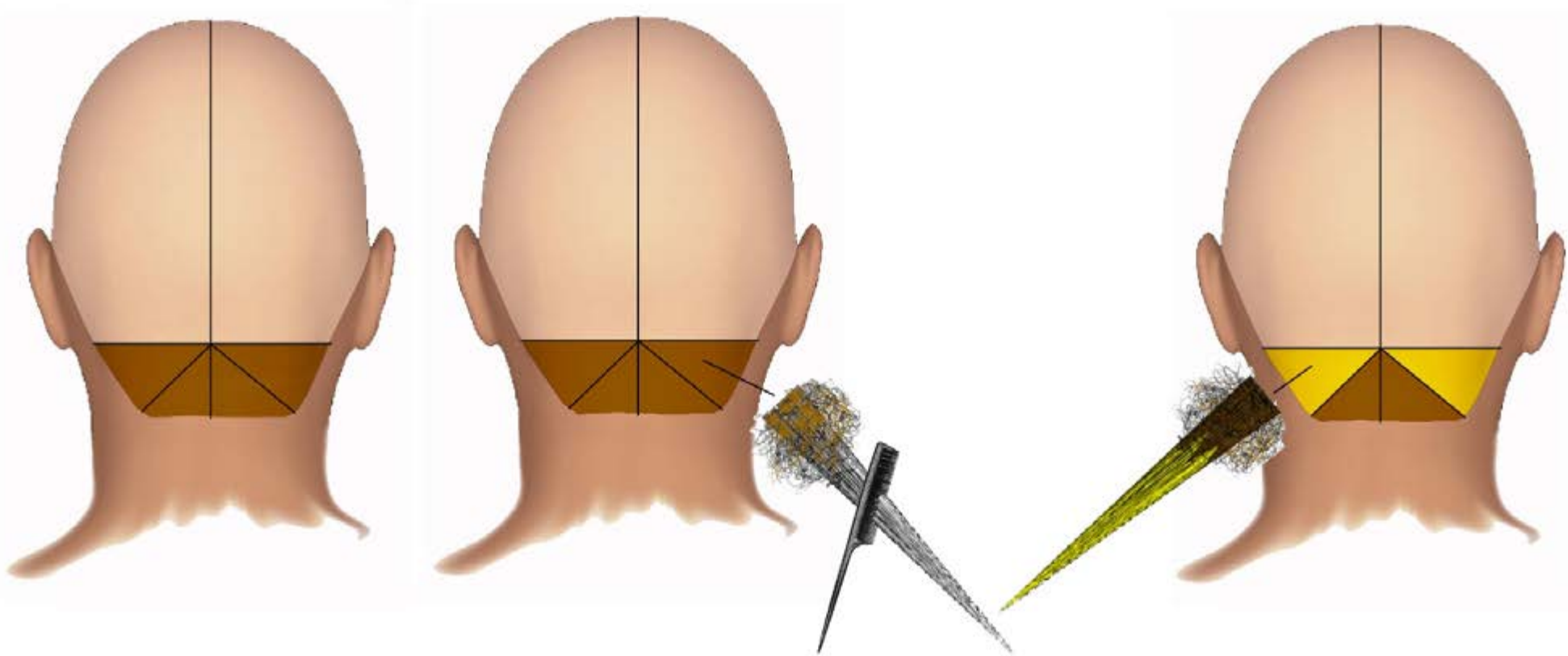
**MASTER BLEACH** TECHNIQUE SERIES



We divide into sectors as illustrated.  
 Central line from the frontal ridge to the center of the nape passing through the epicentre, vertex and occipital.  
 From ear, epicenter opposite ear. We obtain a rhombus on the top.  
 From the vertex to 3cm to the right and left of the epicenter.  
 From the two points obtained, up to the center of the front draft.

**MASTER BLEACH TECHNIQUE SERIES**

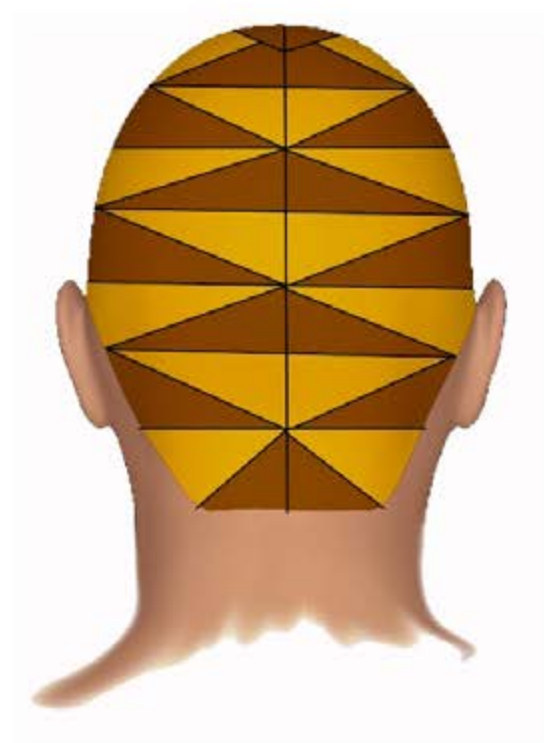
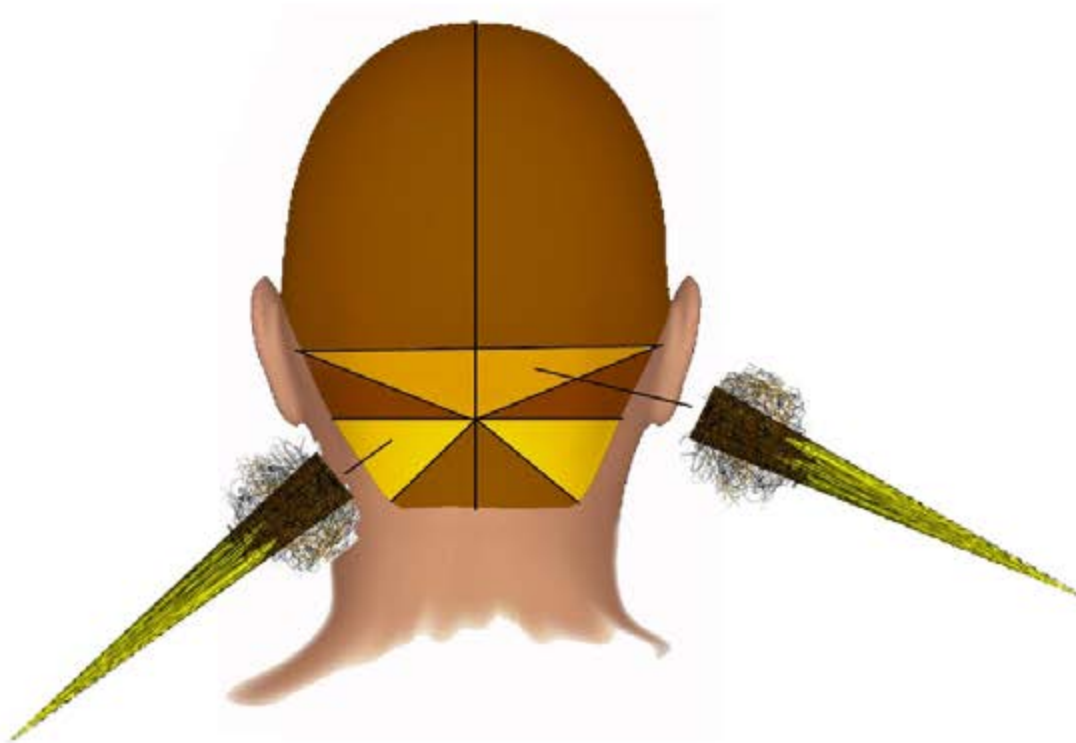
**MASTER BLEACH TECHNIQUE 01**



We take a horizontal sector on the nape of the neck, divide it into four sections and with the balayage technique, work the upper sections by applying bleach to the tips.

**MASTER BLEACH TECHNIQUE SERIES**

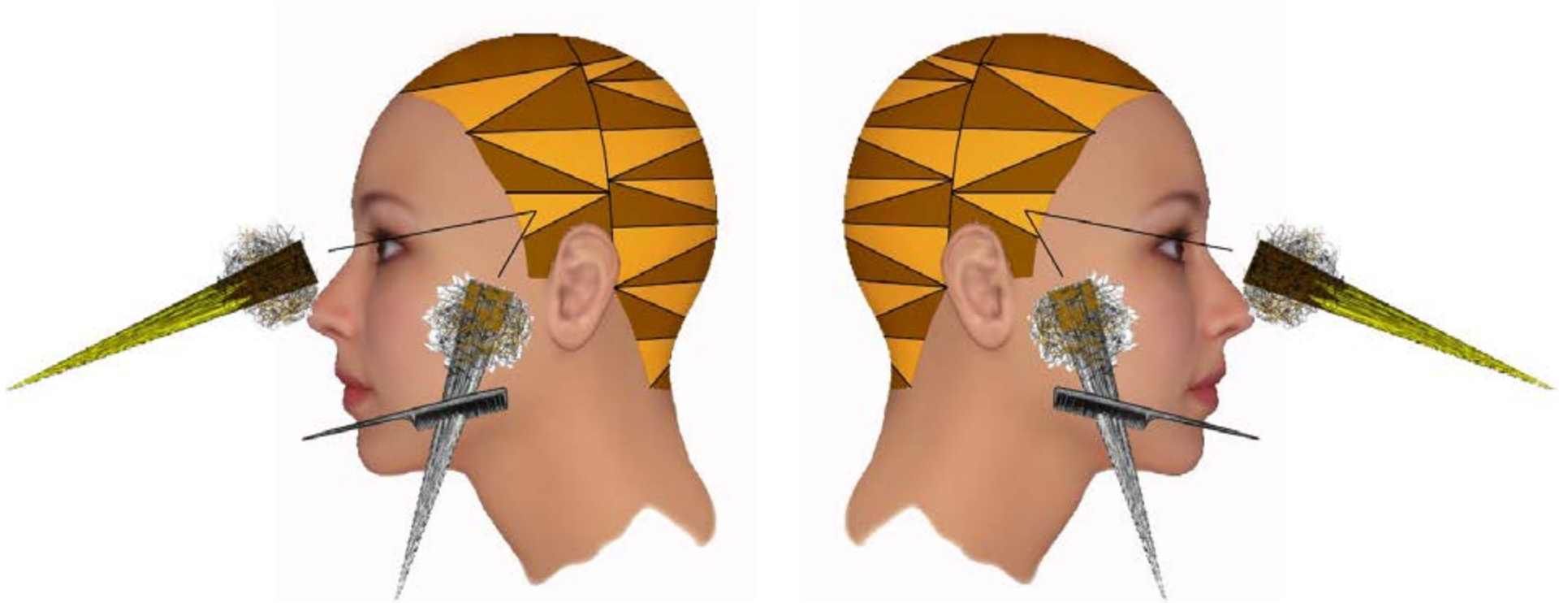
**MASTER BLEACH TECHNIQUE 01**



We take a second horizontal sector of the same size as the first.  
We divide it into four in a mirror image of the first. Also in this case we work on the upper sections with the same balayage technique.  
We proceed in the same way until the entire back area has been worked.

**MASTER BLEACH** TECHNIQUE SERIES

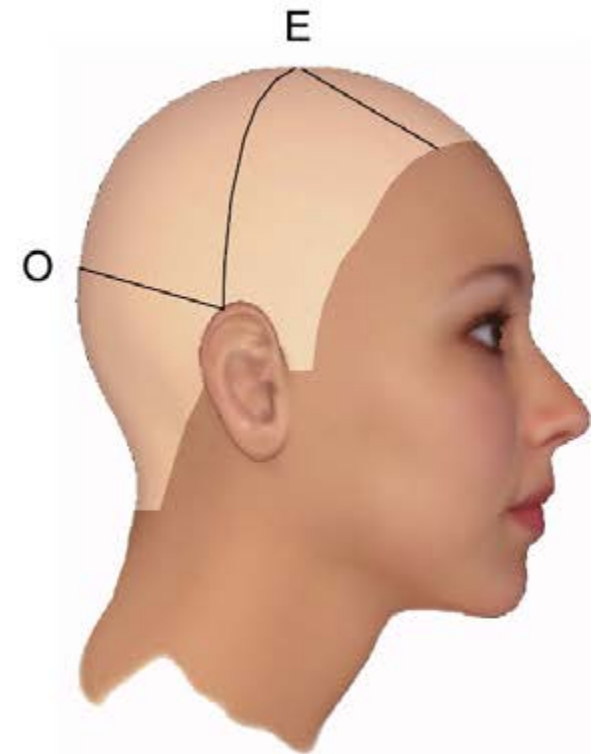
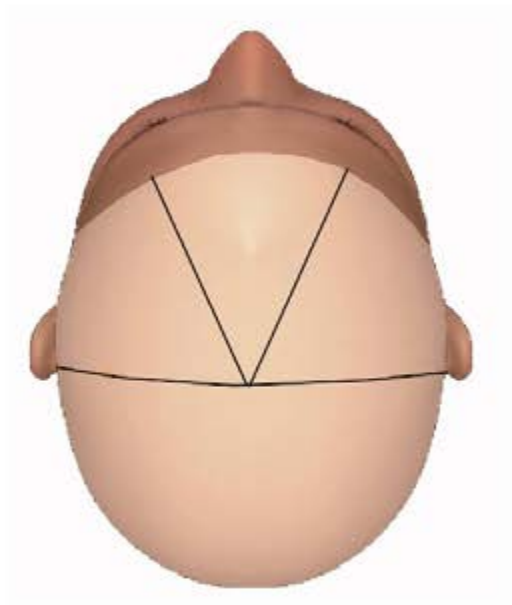
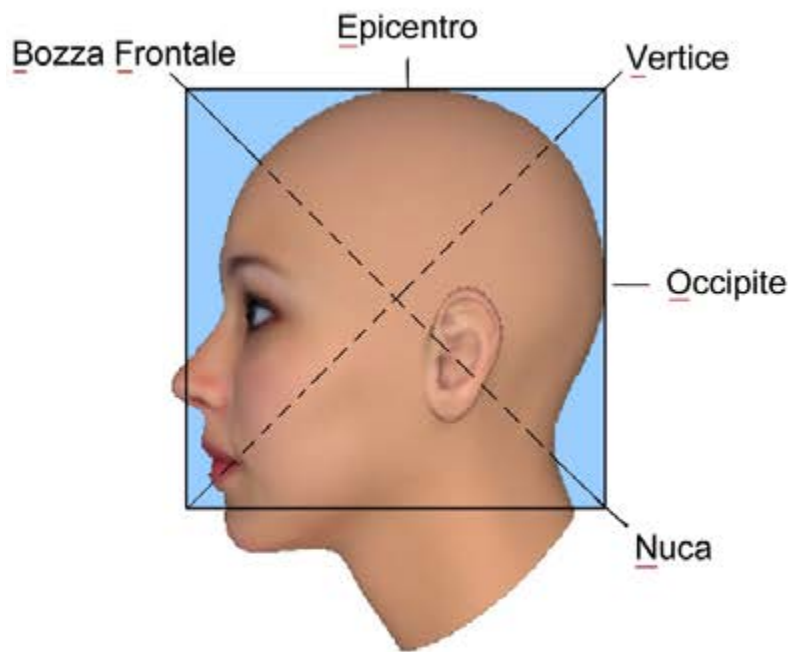
**MASTER BLEACH** TECHNIQUE 01



Same technique on both sides until you reach the diamond at the top.  
The rhombus will be left in its natural color.

**MASTER BLEACH** TECHNIQUE SERIES

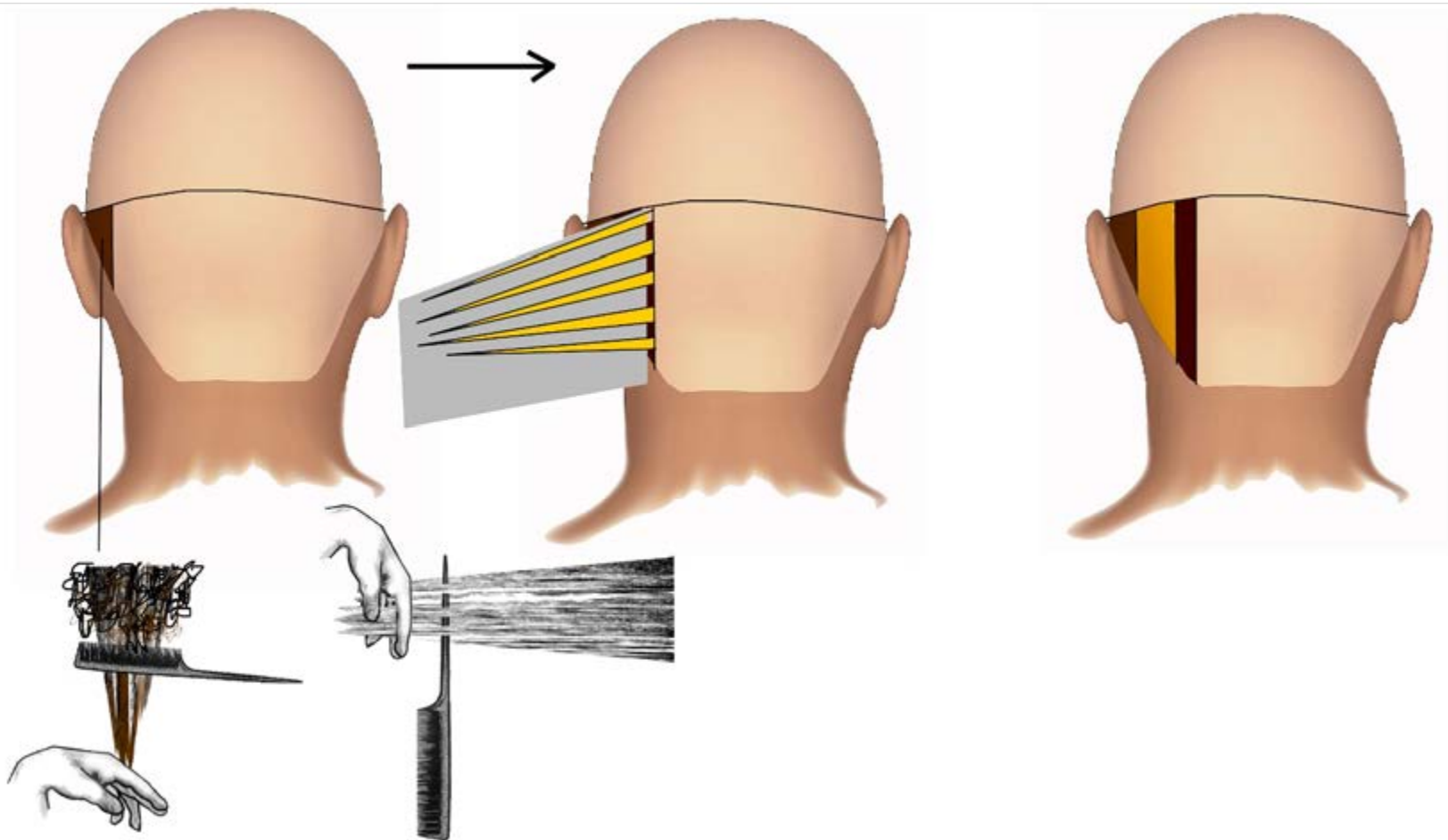
**MASTER BLEACH** TECHNIQUE 01



We divide into sectors as illustrated.  
 We obtain the fringe triangle from the middle of the left eyebrow to the epicenter up to the middle of the right eyebrow.  
 From right ear to epicenter to left ear.  
 From ear to ear passing over the occiput.

**MASTER BLEACH** TECHNIQUE SERIES

**MASTER BLEACH** TECHNIQUE 02



In the nape area, we take a first vertical section, backcomb it with the balayage technique and apply bleach.  
 We take a section adjacent and parallel to the first, with the tricotage technique taken near the tips, we color the base, length and tip with bleach.  
 We isolate the tricotage with silver paper.  
 We leave the third section, smaller in width than the previous ones, in the natural color.

**MASTER BLEACH TECHNIQUE SERIES**

**MASTER BLEACH TECHNIQUE 02**

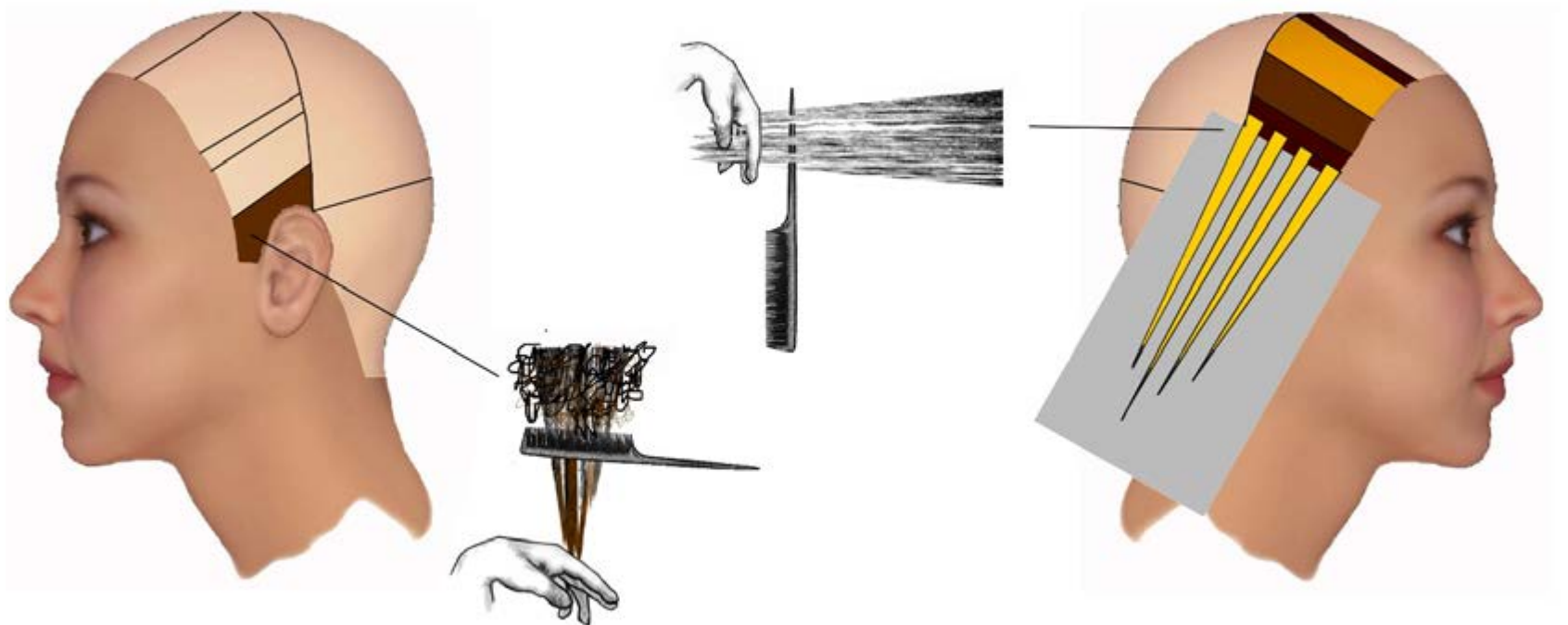


Proceeding from left to right, we repeat the same procedure on the sections to follow.  
With the same procedure, we proceed in the upper sector in reverse: from right to left.

**MASTER BLEACH** TECHNIQUE SERIES

**MASTER BLEACH** TECHNIQUE 02

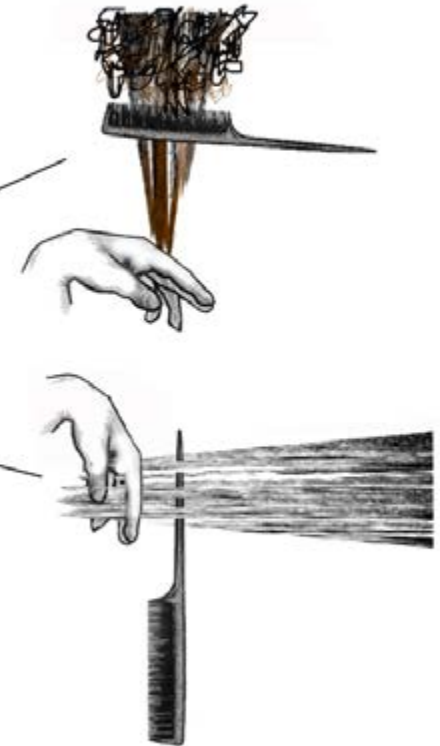
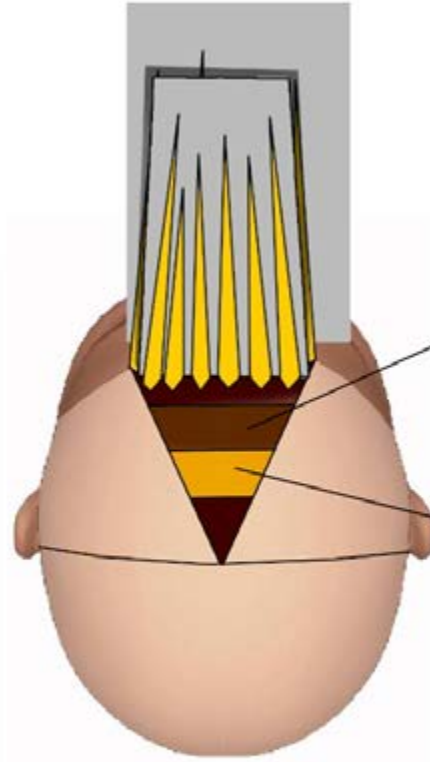
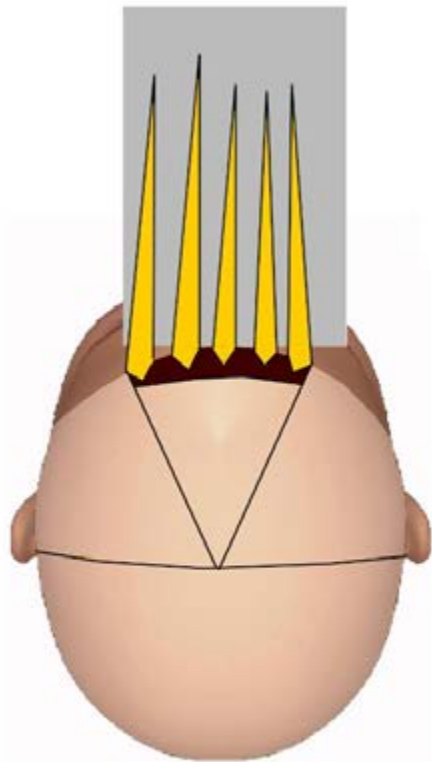




On the sides, we take a first diagonal section, backcomb it and use the balayage technique.  
The following, parallel to the first, with the knitting technique.  
The third, smaller in width, we leave in the color natural.  
We continue alternating the techniques up to the fringe triangle.

**MASTER BLEACH TECHNIQUE SERIES**

**MASTER BLEACH TECHNIQUE 02**



Let's take a first horizontal section on the front draft on the fringe triangle.  
With the microblading technique, we isolate and bleach base length and tip.  
Likewise the next section. The third balayage technique section.  
The fourth tricotage section extrapolated from the tips.  
The remaining section, we leave natural.

**MASTER BLEACH** TECHNIQUE SERIES

**MASTER BLEACH** TECHNIQUE 02



ITLY-0689-master-bleach-techniques

FOR EDUCATIONAL USE ONLY © 2024  
[www.itelyhairfashion.us](http://www.itelyhairfashion.us)